

mini
SKY★
IMPLANT SYSTEM

Numerous prosthetic options
O-ring housing, retention.loc or
direct screw-retained bar



Antirotational mechanism prevents
screw loosening. The best Locator
connection.

High implant abutment connection
guarantees utmost stability.



mini
SKY★
IMPLANT SYSTEM

**PROSTHESIS
FIXATION**



REF 009910GB



REF 000250GB

00991168-20170217
Subject to corrections and changes



mini
SKY★
IMPLANT SYSTEM

**PROSTHESIS
FIXATION**

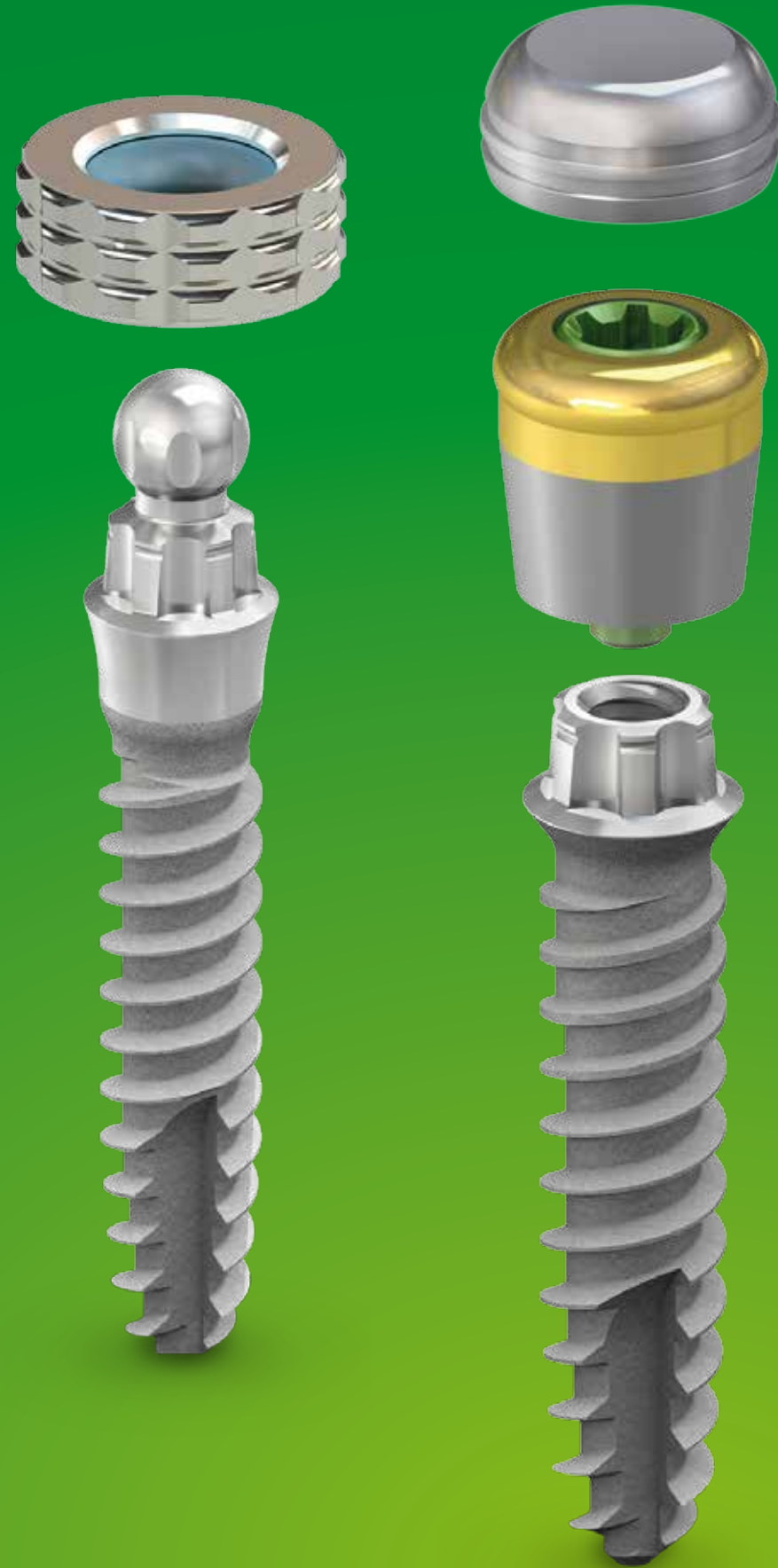


“The perfect system for fixation of dentures”

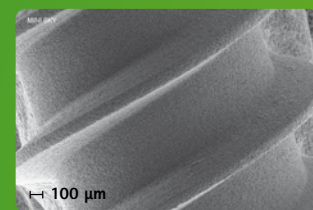
Prosthesis fixation with minimal bone material – a quick and easy process.

miniSKY is the ideal system for the quick fixation of prosthesis with toothless, small and severely atrophied jaws.

It offers those providing treatment a range of prosthetic options – from cost-effective restoration with the single-piece miniSKY implant with ball head, to the mini²SKY bar solution with screw fitting.



Osseo-Connect-Surface (OCS)[®] for fast and reliable apposition of osteoblasts to ensure optimised tissue apposition.



The benefits



Easy to use and short treatment time
by avoiding the need for augmentations



Quick fixation and immediate restoration
thanks to a standardised surgical protocol



Clinically proven and scientifically substantiated
over 10 years



Open up new patient groups
Cost-effective solution for existing prosthesis



Everything from a single source
thanks to the bredent group's perfectly matched implant prosthetic solutions



Satisfied patients
more self-confidence and quality of life thanks to the minimally invasive procedure



Dr. Jörg Neugebauer
Landsberg/University of Cologne

“We have been using the miniSKY system for fixation of prosthesis for both immediate and subsequent restoration for over nine years in our practice now. The results indicate a stable bone level and a high level of patient satisfaction*.”

*Dr Henrich N., Dr Weiss M., Dr Neugebauer J., Durchmesserreduzierte Implantate – Übergangslösung oder minimalinvasive Alternative? (Narrow diameter implants – interim solution or minimally invasive alternative?)



Dr. Klaus Krischan
Liezen

“miniSKY means that our older patients and those with no teeth can use their existing prosthesis again!”



Dr. Christian Krempel
Leibnitz

“With the miniSKY system, we can provide patients who would otherwise decide not to have implant therapy for financial reasons with high quality restorations.”

Unique in the world of dentistry.
Immediate prosthesis fixation with retention.sil prosthetics silicone during the healing phase.

