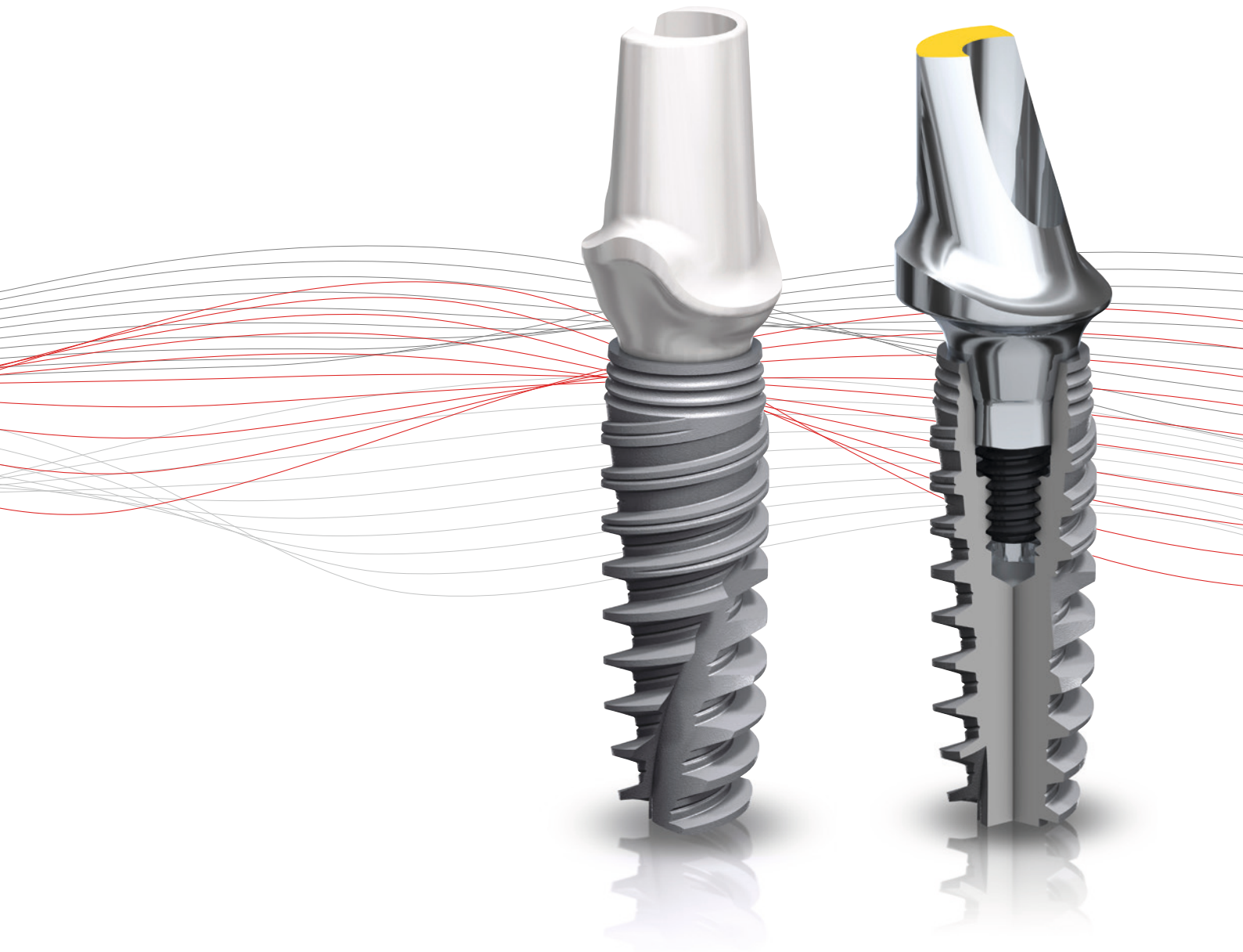
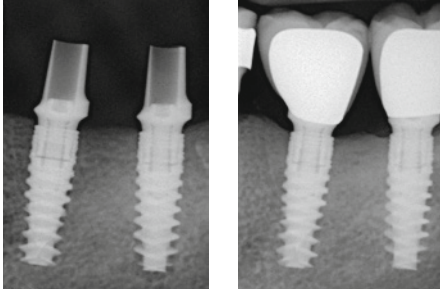


An implant like no other  
NobelActive® for exceptionally high  
initial stability and esthetic excellence



# Unique implant design for maximum stability and esthetic excellence

## Clinically proven



Three-year data from an ongoing five-year study demonstrates continued positive trends consistent with the one- and two-year results.<sup>1,2,3</sup> Bone remodeling occurred during the first three months of the study, followed by increasing or stable bone levels. Soft tissue variables have been stable throughout the study. Illustrations show first and second molar, immediately loaded single crowns at insertion and after 24 months (courtesy of Prof M. Lorenzoni, Graz, Austria).

1 Kielbassa AM, Martinez-de Fuentes R, Goldstein M, Arnhart C, Barlattani A, Jackowski J, Knauf M, Lorenzoni M, Maiorana C, Mericske-Stern R, Rompen E, Sanz M. Randomized controlled trial comparing a variable-thread novel tapered and a standard tapered implant: interim one-year results. *J Prosthet Dent.* 2009 May;101(5):293-305

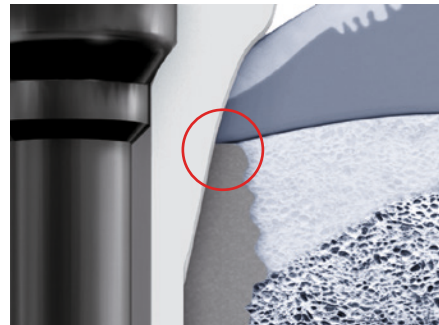
2 Martinez-de Fuentes R, Arnhart C, Barlattani A, Goldstein M, Jackowski J, Kielbassa AM, Lorenzoni M, Maiorana C, Mericske-Stern R, Rompen E, Sanz M, Strub JR. Two-year Follow-up of NobelActive, a Variable-Thread Novel Tapered Implant. *J Dent Res* 2010;89(Spec Iss B):4704

3 Clinical evaluation of NobelActive. Ongoing study in 12 centers. Clinical Research Department, Nobel Biocare. Three-year follow-up data on file.

4 Atieh MA, Ibrahim HM, Atieh AH. Platform switching for marginal bone preservation around dental implants: a systematic review and meta-analysis. *J Periodontol.* 2010;81(10):1350-66

5 Glauser R, Portmann M, Ruhstaller P, Lundgren AK, Hämmerle C, Gottlow J. Stability measurements of immediately loaded machined and oxidized implants in the posterior maxilla: a comparative clinical study using resonance frequency analysis. *Appl Osseointegration Res* 2001;2:27-9

6 George KM, Choi YG, Rieck KL, Van Ess J, Ivancakova R, Carr AB. Immediate restoration with ti-unite implants: practice-based evidence compared with animal study outcomes. *Int J Prosthodont* 2011; 24(3):199-203



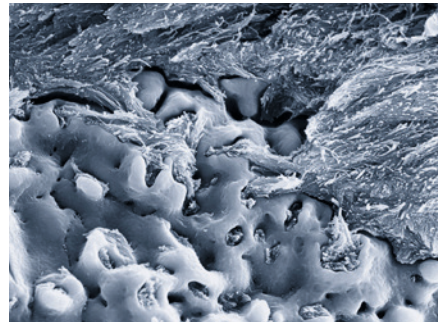
Platform shifting.

## Maximum soft tissue volume

Built-in platform shifting designed to improve soft tissue for natural-looking esthetics.<sup>4</sup>

## Enhanced osseointegration

Unique oxidized TiUnite surface with grooves (Groovy) increases implant stability through faster bone formation and ensures long-term success.<sup>5,6</sup>



The unique combination of controlled titanium oxide texture and porosity makes bone grow directly onto and into the surface. (Courtesy of Dr Peter Schüpbach, Switzerland)



Dental Product Shopper voted NobelActive Best Product 2009 only one year after its market introduction. [www.dentalproductshopper.com/nobelactive](http://www.dentalproductshopper.com/nobelactive)



### Dual-function prosthetic connection

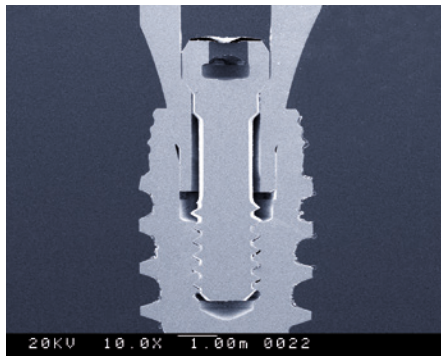
Internal conical connection for abutment-supported restorations and external platform for unique implant level bridges in titanium and zirconia.



Single-unit and multiple-unit interface.

### Strong sealed connection

Internal conical connection with hexagonal interlocking offers tight seal and secure positioning of abutments.



Magnification (10x) of the interface between abutment and implant.

### Digital precision

#### Next generation diagnostics and treatment planning with NobelClinician Software

- Enhanced diagnostics combining 2D and 3D views of the patient's anatomy
- Digital treatment planning considering availability of bone and prosthetic needs
- Online collaboration between treatment partners with NobelConnect
- Seamless integration with NobelGuide treatment concept



### Esthetic excellence

#### Precision Milled Restorations with NobelProcera

- Broad choice of solutions from individualized abutments to screw-retained crowns, implant bridges and implant bars overdenture
- Wide range of materials for cement-retained full-contour crowns, copings and bridges on abutments
- Medical device standards and consistent precision of fit through industrial production



# Esthetics like no other

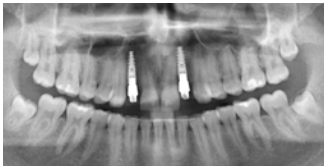
## Anterior restoration

20-year-old male, non-smoker, congenitally missing two upper lateral incisors, labial profile with concavities and lack of bone volume



### Diagnosis

CT scan confirmed sufficient bone volume (labial/palatal width) for placement of narrow diameter implants due to slight subsidence of facial bone table.



### Implant placement

Minimally invasive surgical approach with a semi-lunar primary incision of the ridge and two very short release incisions. Placement of two NobelActive NP 3.5 x 13mm implants.



### Soft tissue contour development

Intra-oral resizing of Procera Esthetic Abutments Zirconia using profuse irrigation.



### Provisional restoration

Immediate function with provisional crowns. Picture shows tissue response to provisional restoration six weeks after implant placement.



### Final restoration

Placement of NobelProcera Crowns four months after surgery. The soft tissue and radiographic results after 24 months show excellent soft tissue contours and stable bone levels.

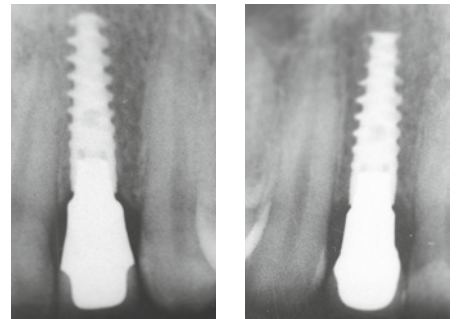
«An incredibly effective implant that provides excellent stability even in compromised sites; because of its unique features to preserve the biology of marginal hard and soft tissues, NobelActive has become my No. 1 implant in the esthetic area.»



Dr Eric Rompen, Professor and Department Head of Periodontology/Dental Surgery, University of Liège, Belgium



Precise margin adaptation of the provisional restoration



X-rays 24 months after implantation showing stable bone levels

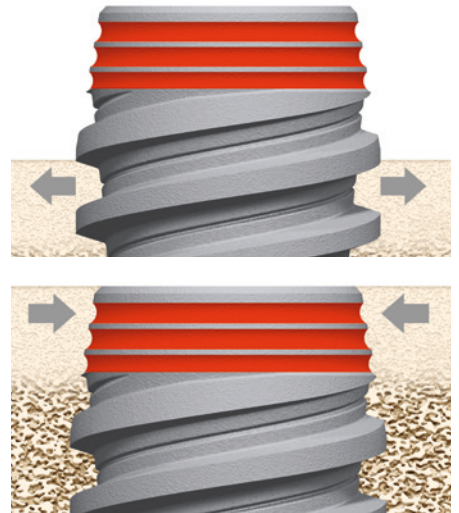
Case courtesy of Dr Eric Rompen (Belgium)

Provisional restoration C. Legros, final restoration C. Binamé, dental laboratory M. Picone





### Optimal soft tissue support



Back-tapered collar provides additional bone volume.

### Maximum alveolar bone volume

Back-tapered coronal design for optimal soft tissue support.

### High initial stability even in compromised bone situations

Expanding tapered implant body with double-lead thread design condenses bone gradually.

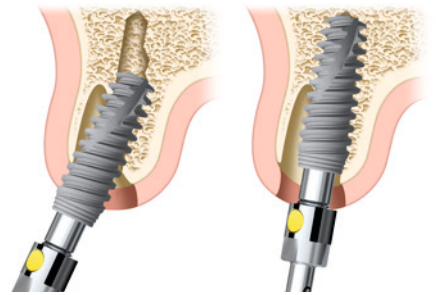
### Adjustable implant orientation

Reverse-cutting flutes with drilling blades on apex enable experienced clinicians to adjust implant position for optimal restorative orientation, particularly in extraction sites.

### Maximum bone preservation

Apex with drilling blades enables smaller osteotomy.





### Optimal prosthetic orientation

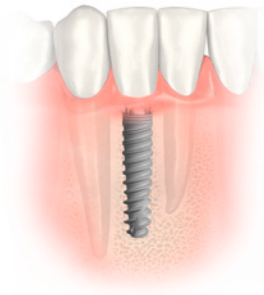


Minimally invasive insertion and adjustable implant orientation optimize the prosthetic orientation.

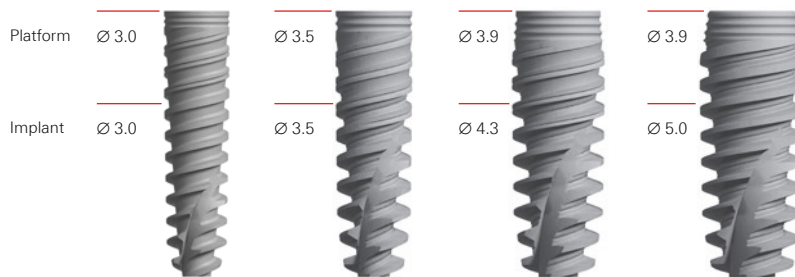
# Try it once, you'll never go back

## NobelActive®

Platform				
Implant Ø	3.0 mm*	3.5 mm	4.3 mm	5.0 mm
Length				
8.5 mm	-	35221	35223	35225
10 mm	36769	34125	34131	34137
11.5 mm	36770	34126	34132	34138
13 mm	36771	34127	34133	34139
15 mm	36772	34128	34134	34140
18 mm	-	35215	35219	35220



New: NobelActive 3.0 for limited spaces.



\* NobelActive 3.0 is only indicated for the replacement of single-unit maxillary lateral incisors and single-unit mandibular lateral and central incisors. Multiple-unit restorations are neither indicated nor accommodated by restorative components.



On all Nobel Biocare implants including prefabricated prosthetic components.



nobelbiocare.com/nobelactive

73717 G GB 1607 Printed in the EU © Nobel Biocare Services AG, 2011. All rights reserved. Nobel Biocare, the Nobel Biocare logo and all other trademarks are, if nothing else is stated or is evident from the context in a certain case, trademarks of Nobel Biocare. Please refer to nobelbiocare.com/trademarks for more information. Product images are not necessarily to scale. Disclaimer: Some products may not be regulatory cleared/released for sale in all markets. Please contact the local Nobel Biocare sales office for current product assortment and availability. For prescription use only. Caution: Federal (United States) law restricts this device to sale by or on the order of a licensed dentist. See Instructions for Use for full prescribing information, including indications, contraindications, warnings and precautions.