

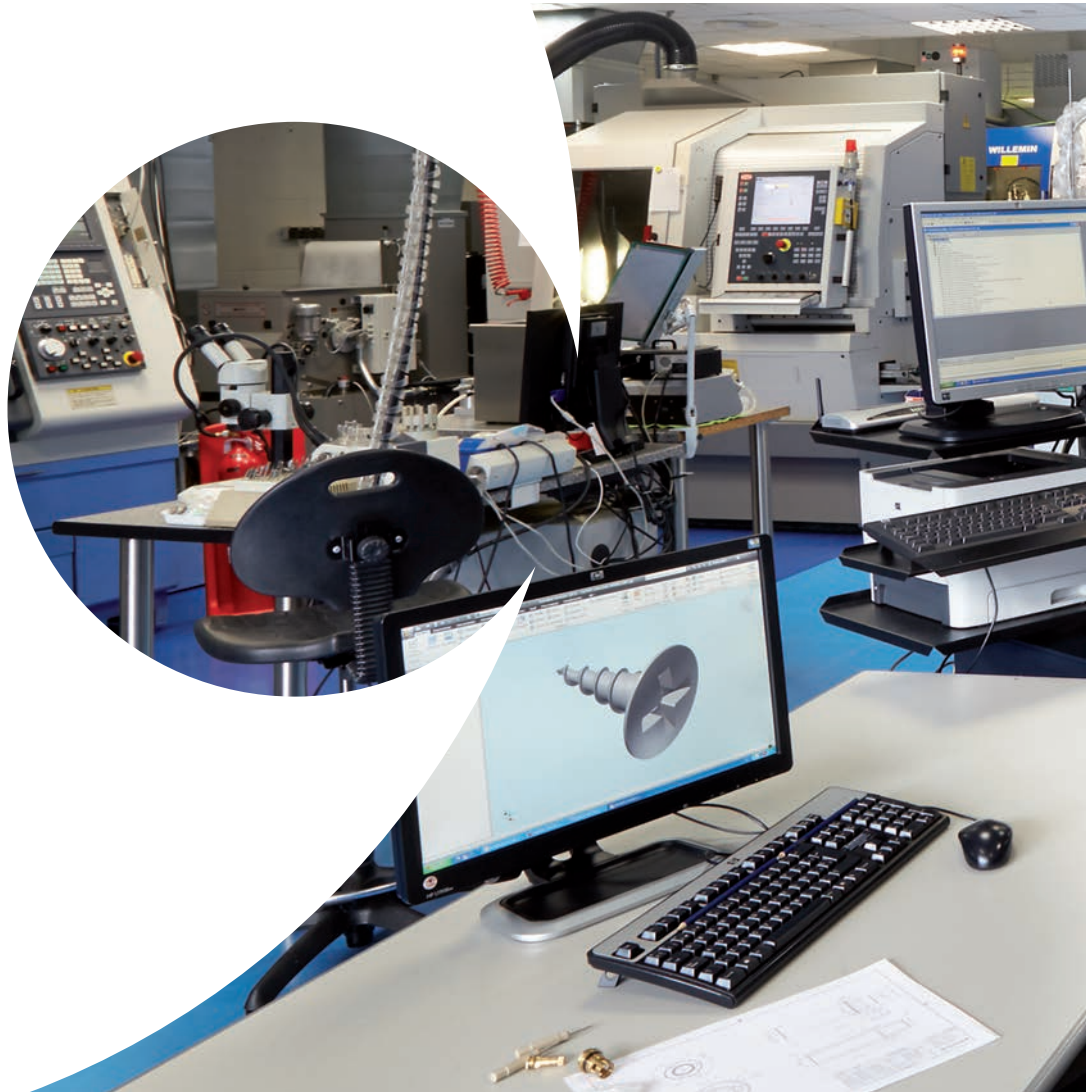
IMPLANT TOP DM

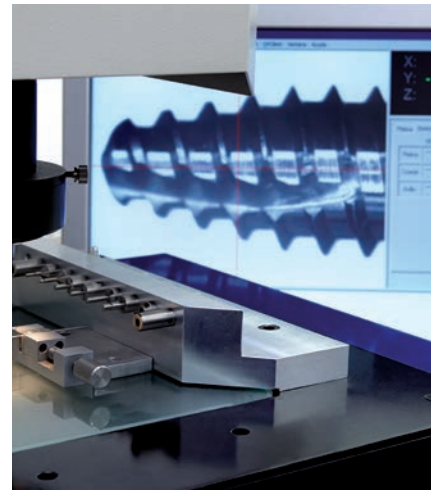
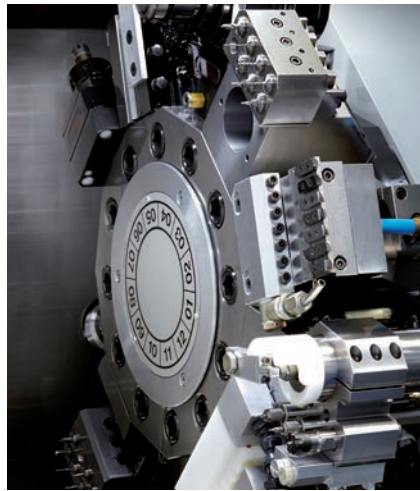






“ Since its founding in 1992, Bioner’s activities have been geared to supplying the Spanish implant market. In recent years Bioner has begun its international expansion without compromising the values that have driven its growth: the accuracy and quality of its products, the ongoing collaboration with professionals and prestigious organizations and a first order technical and commercial service. ”





Bioner's production plant consists of CNC lathes and state-of-the-art machining centers. This technological equipment is combined with the most sophisticated measurement tools and the most rigorous inspection protocols. Bioner applies

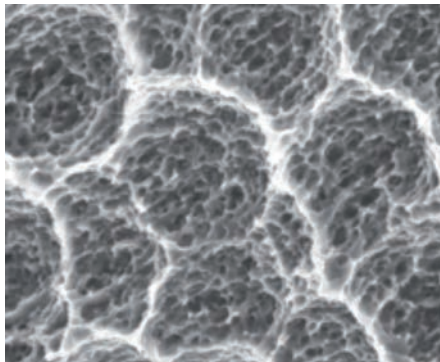
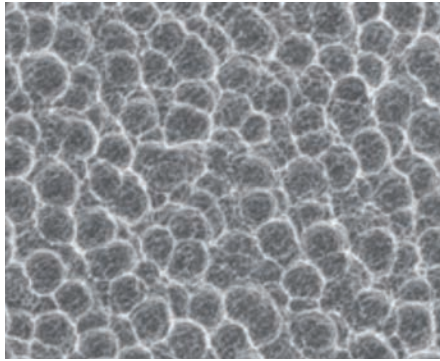
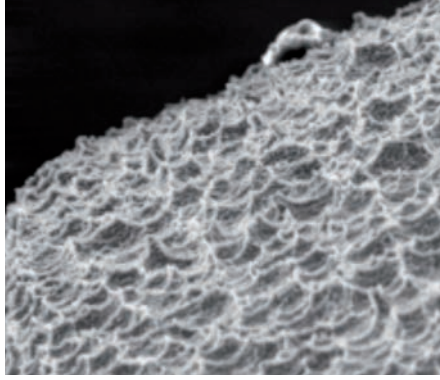
the regulatory patterns contained in the ISO 9001, as indicated in its specific version for the management of medical devices, as well as the ISO 13485, to all of its processes, holds both certifications and bears the CE mark.





MACHINING OF THE IMPLANTS

Bioner has applied all the expertise gained throughout its history to its new implant system, Top DM, starting with the initial phase of the production process, the machining. The Top DM implant is made from grade 5 titanium, a material that allows working with small diameters with great precision. This allows the Top DM implant to display one of the hallmarks of Bioner: excellence in machining.



BIONER SURFACE TREATMENT

Bioetch, the exclusive surface treatment developed by Bioner for Top DM, is a double acid attack that gives the implant a micro and macro structured surface. The advantage of the Bioetch process is that this particular surface morphology is obtained without sandblasting prior to the acid attack, eliminating the risk of surface contamination. With an average roughness value of 1.3 microns, Top DM has the best grade 5 surface in the market.

GEOMETRY OF THE IMPLANT

The Top DM implant is reinforced with an expanding conical core of increasing diameter from the apical to the coronal area. This favors its insertion in areas with low bone volume. Its dual pitch and neutral apex ensure a quick, safe insertion and optimal primary stability.



DIMENSIONS

The Top DM implant is available in 3 different lengths and diameters in order to provide an effective replacement solution for any clinical condition.

D-35	DM-40	DM-50
	7 mm	7 mm
8,5 mm	8,5 mm	8,5 mm
10 mm	10 mm	10 mm
11,5 mm	11,5 mm	11,5 mm
13 mm	13 mm	13 mm
15 mm	15 mm	15 mm

THE DRILLING PROTOCOL

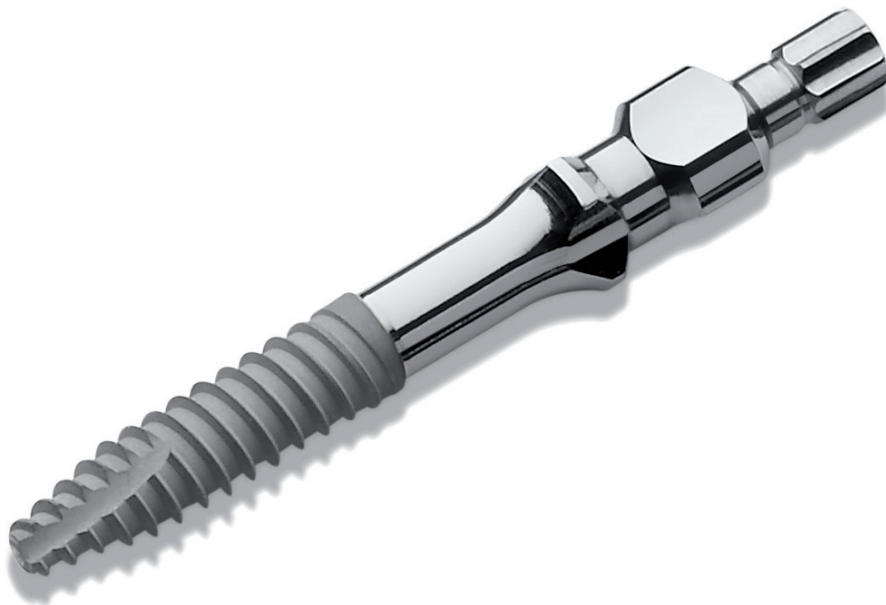
In line with the latest scientific research, the drilling protocol for Top DM's implant system, is characterized by its simplicity. In most cases it is sufficient to use 2 or 3 drills at most. The drilling stop system adds extra safety and simplicity to the process.



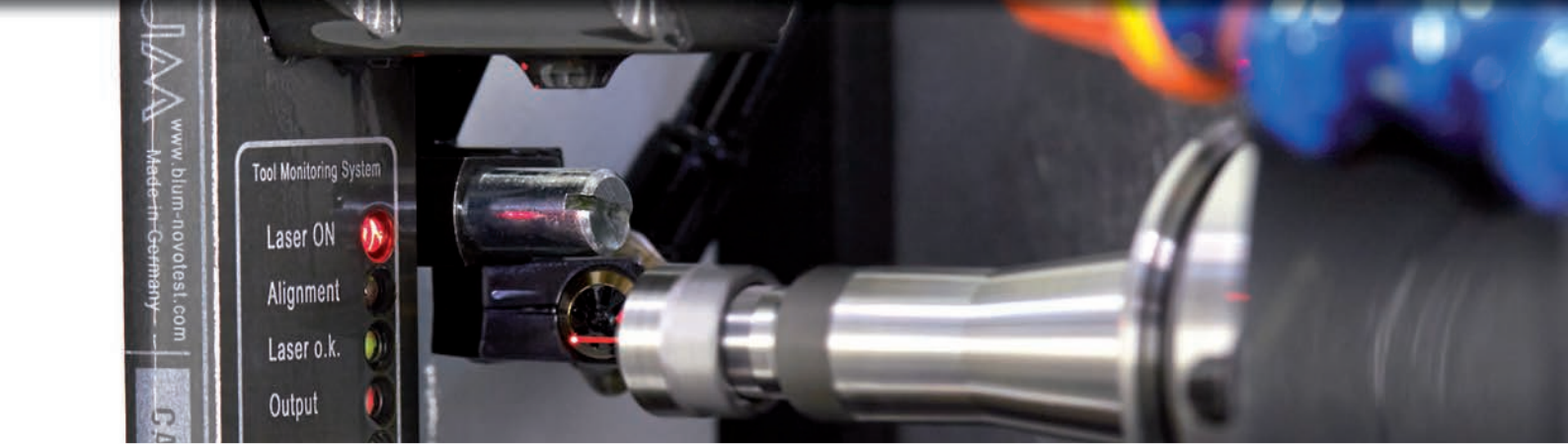
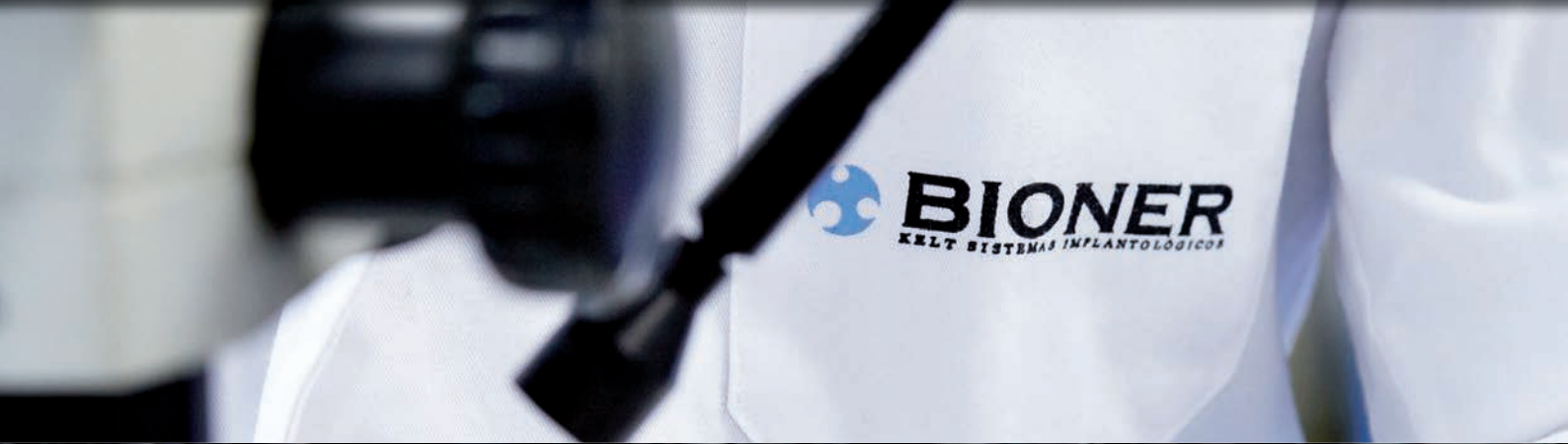
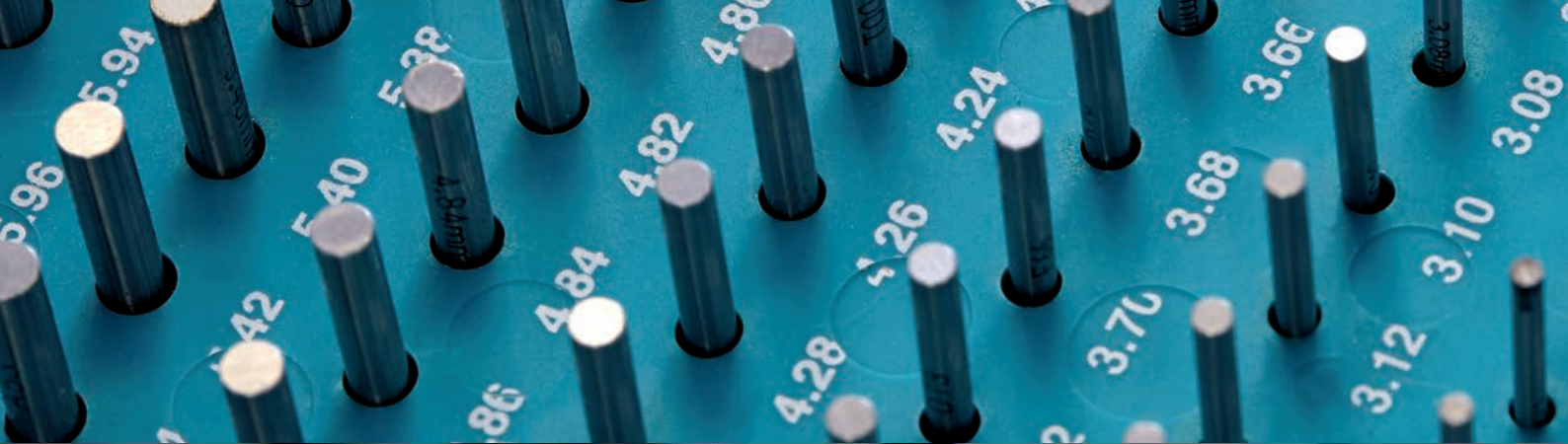
PROSTHETIC CONNECTION

The conical connection indexed in the Top DM implant, minimizes micro-motion and gaps between components. This preserves the bone and even allows infra-bony implant placement. All diameters share a single narrow implant prosthetic platform of 3 mm diameter, which maintains the stability of

the soft tissues and ensures an effective biological seal. The emergence profiles of all prosthetic components are consistent with one another. The secure lock mechanism incorporated in the impression copings ensures that all components fit perfectly and avoids the need for control x-rays.







Espigolera, 9 / 08960 Sant Just Desvern, Barcelona
T. +34 934 700 360 / F. 934 703 527 / bioner@bioner.es / bioner.es