

The definitive solution Short DM

Short DM stems from the need to solve one of the biggest challenges has the current Implantology: atrophic posterior mandible. To deal with guarantee these cases requires a systematic that can provide us maximum security. **Short DM** combines advanced design with **BIOETCH**® surface, the best in grade 5 titanium in the market, already present in the **Top DM** implant. The combination of both ensures a high primary stability and fast osseointegration.



16110401



BIONER
SISTEMAS IMPLANTOLÓGICOS

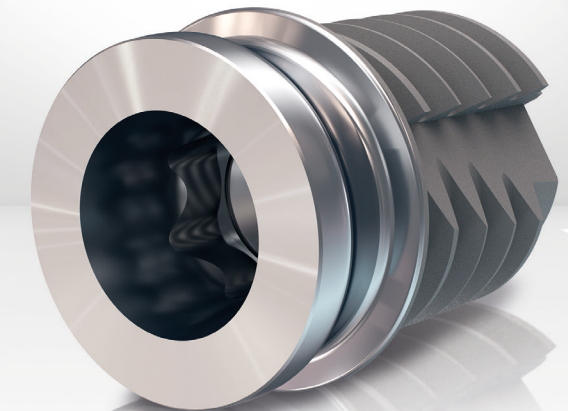
Follow us:



BIONER S.A. • Espigolera, 9 • (08960) Sant Just Desvern. Barcelona.

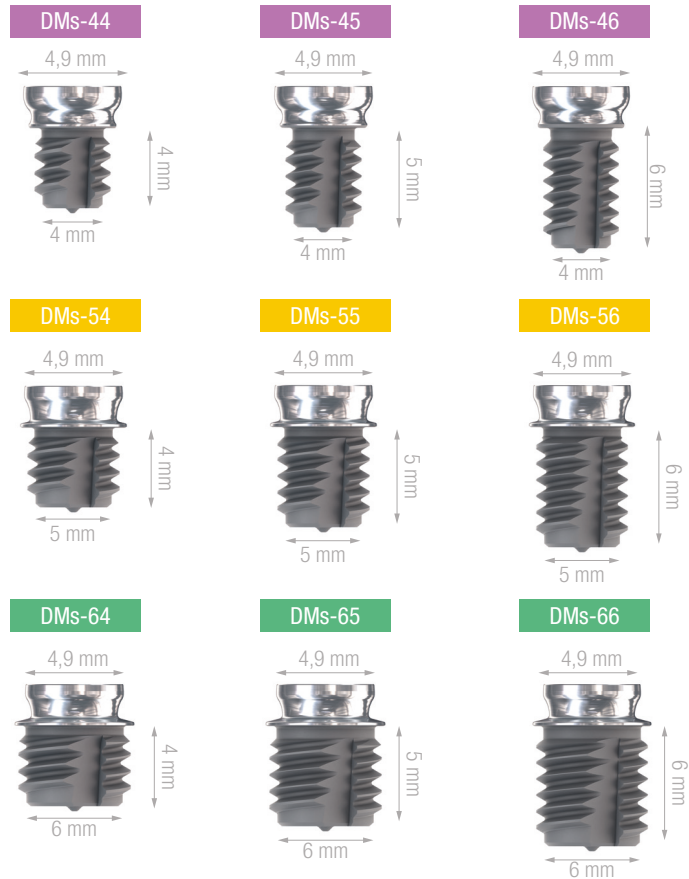
BIONER
SISTEMAS IMPLANTOLÓGICOS

Short DM



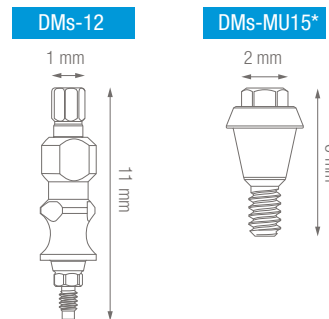
The ultimate in implantology

Technical specifications Short DM and attachments



Short DM Special implements

The rest of implements are common with Top DM



*It turn the implant to microcone platform

Milling system Secure® Bioner

Compromised clinical situations require special security measures. Traditional milling cut near the inferior alveolar nerve or maxillary sinus constitute a risk situation. Our **department of R + D + I**, based on surgery specialties where precision and safety are critical especially, as in the case of **Neurosurgery**, has developed an innovative **SECURE®** milling system, composed of rotatory diamond bur that enable to work to the limit without damage important structures.

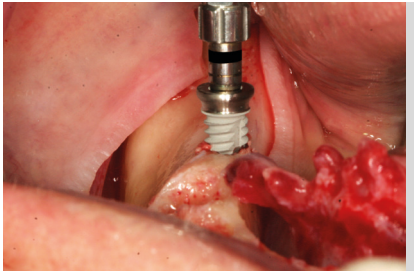

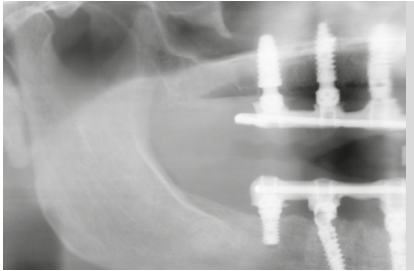

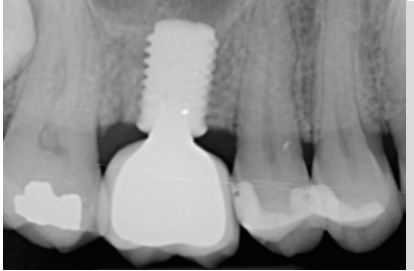
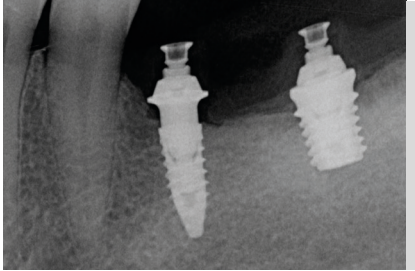


DIAMOND BUR
Maximum precision and safety
in compromised clinical situations.

FP	Ø 4 mm	Ø 5 mm	Ø 6 mm
1200 RPM	1200 RPM	1200 RPM	1200 RPM



CLINICAL MANAGEMENT Short DM

-  Ease of insertion. **High primary stability.** Short DM 5x4mm.
-  Tissue integration with microcone pillar.
-  Short DM as distal support.
-  **SECURE® Milling.** High safety in proximity to the alveolar nerve.
-  **Seamless integration** in proximity to the maxillary sinus floor. Short DM 4x6mm.
-  **Compatibility 100%** with Top DM.

Dr. David Morales Sharwc

Doctor of Dentistry. Postgraduate in implantology and periodontology from University of New York (NYU).
Graduated in oral and maxillofacial implantology from University of Paris XII